

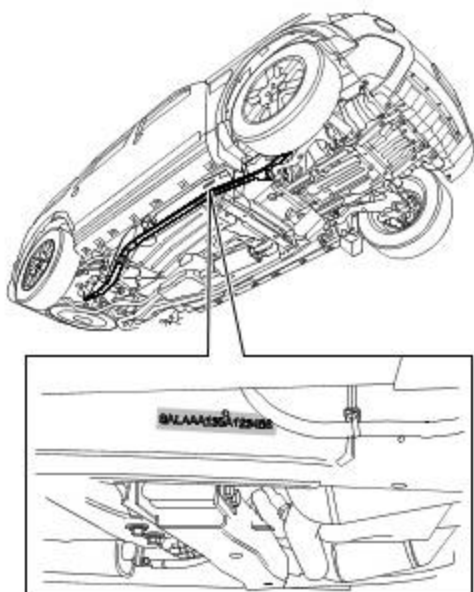
## Identification Codes

### VIN Number

The VIN number will be found in three locations:

- 1. Stamped on the side of the RH longitudinal member, rearward of the body front mounting.
- 2. At the bottom of the windshield glass on the LH side of the vehicle and visible from the outside.
- 3. UK, Europe and ROW - Not NAS/Canada - On the VIN plate attached to the bonnet locking platform.
- 4. NAS/Canada - On the Tire Data/Specification label attached to the front of the LH B-pillar.

### Longitudinal Member VIN



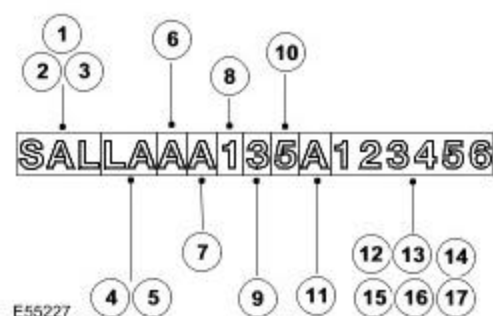
E54942

### Windscreen VIN



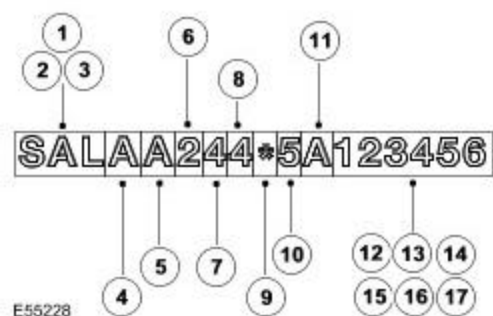
E54943

### VIN number - UK, EU and ROW



VIN Position	Character	Identifies
1 - 3 - World identifier	SAL	Land Rover (UK)
4,5 - Vehicle type	LA	Discovery 3
6 - Class	A	Standard
7 - Body style	A	4 Door
8 - Engine	1	276DT - V6 2.7 Diesel
8 - Engine	4	406 PN - V6 4.0 Petrol
8 - Engine	5	448PN - AJV8 4.4 Petrol
9 - Transmission and steering	3	RHD Automatic
9 - Transmission and steering	4	LHD Automatic
9 - Transmission and steering	7	RHD Manual
9 - Transmission and steering	8	LHD Manual
10 - Model year	5	2005
10 - Model year	6	2006
10 - Model year	7	2007
10 - Model year	8	2008
11 - Plant	A	Solihull
12 - 17 - Serial number	1 2 3 4 5 6	Unique six digit serial number

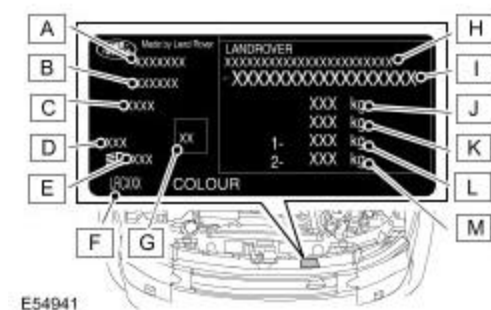
### VIN number - NAS and Canada



VIN Position	Character	Identifies
1 - 3 - World identifier	SAL	Land Rover (UK)
4 - Model range	A	Discovery 3
5 - Class	A	Standard
6 - Body style	2	4 Door
7 - Engine	4	406 PN - V6 4.0 Petrol
7 - Engine	5	448PN - AJV8 4.4 Petrol

8- Transmission and steering	4	LHD Automatic
9 - Check digit	*	Derived by calculation
10 - Model year	5	2005
10 - Model year	6	2006
10 - Model year	7	2007
10- Model year	8	2008
11 - Plant	A	Solihull
12 -17 - Serial number	1 2 3 4 5 6	Unique six digit serial number

## Bonnet locking platform VIN plate - Not NAS/Canada



The VIN plate contains the following information:

- A - Reserved
- B - Engine Description
- C - Country
- D - Diesel Indicator
- E - Reserved
- F - Headlamp Code/initial aim value - If shown
- G - Colour code/group
- H - Type/Approval Number - If shown
- I - VIN Number
- J - Gross Vehicle Weight
- K - Gross Trailer Weight
- L - Front Axle Weight
- M - Rear Axle Weight

## VIN/Certification/Tire Data Label - NAS only



The Certification Label contains the following VIN information:

- A - \* Vehicle VIN Number
- B - Bar code identification

## VIN/Tire Pressure Specification Label - Canada only

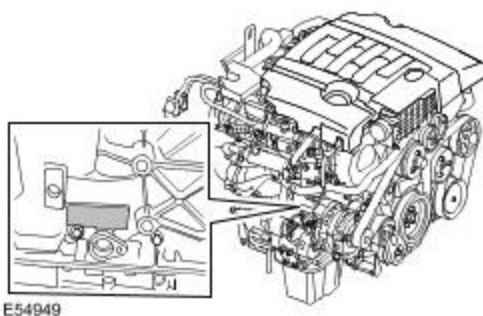


The Tire Pressure Certification Label contains the following VIN information:

- A - Vehicle VIN Number
- B - Vehicle Type

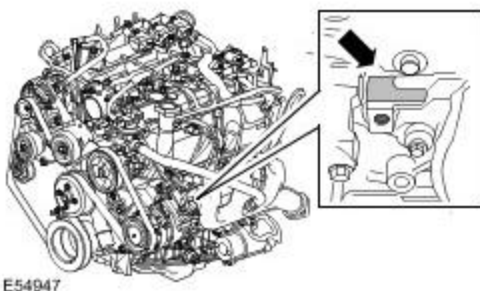
## Unit/Assembly Serial Number Locations

### 2.7 Litre V6 Diesel Engine Serial Number



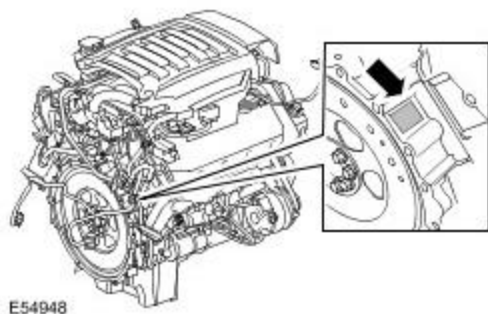
The 2.7 Litre V6 Diesel Engine Serial Number is stamped on the RH side of the cylinder block.

### 4.0 Litre V6 Petrol Engine Serial Number



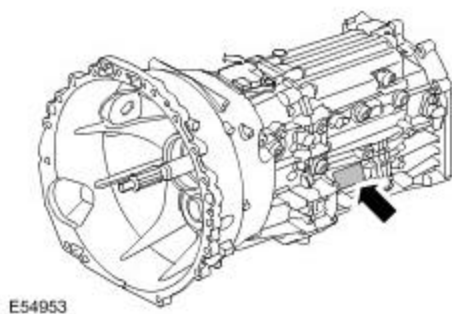
The 4.0 Litre V6 Petrol Engine Serial Number is stamped on the LH side of the cylinder block.

#### 4.4 Litre V8 Petrol Engine Serial Number



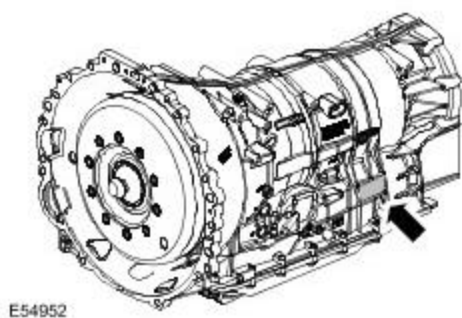
The 4.4 Litre V8 Petrol Engine Serial Number is stamped on the RH side of the starter ring gear housing.

#### Manual Gearbox Serial Number



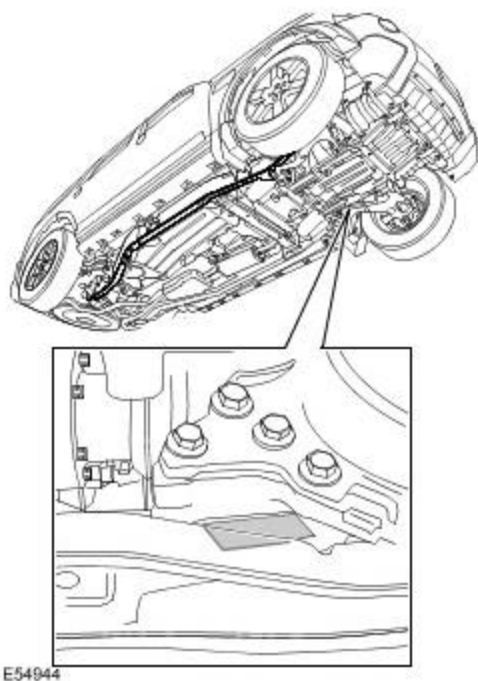
The Manual Gearbox Serial Number is stamped on the rear LH side of the gearbox casing.

#### Automatic Gearbox Serial Number



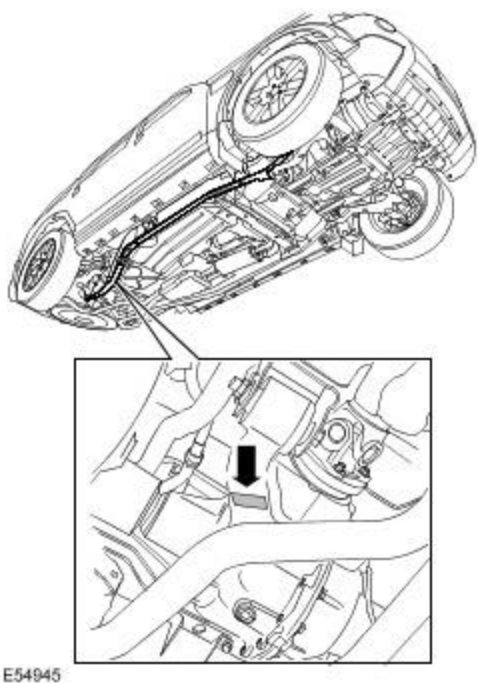
The Automatic Gearbox Serial Number is stamped on the rear LH side of the gearbox casing.

#### Front Differential Serial Number



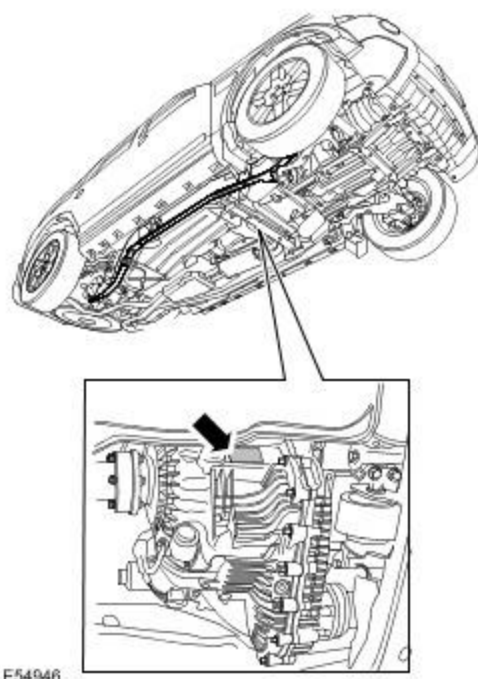
The Front Differential Serial Number is stamped on the underside of the differential casing and is located above the removable cross member.

### **Rear Differential Serial Number**



The Rear Differential Serial Number is stamped on the underside of the differential casing adjacent to the front mounting.

### **Transfer Case Serial Number**



The Transfer Case serial number is stamped on the RH side of the transfer case and may also be on a bar coded self-adhesive label attached to the case.