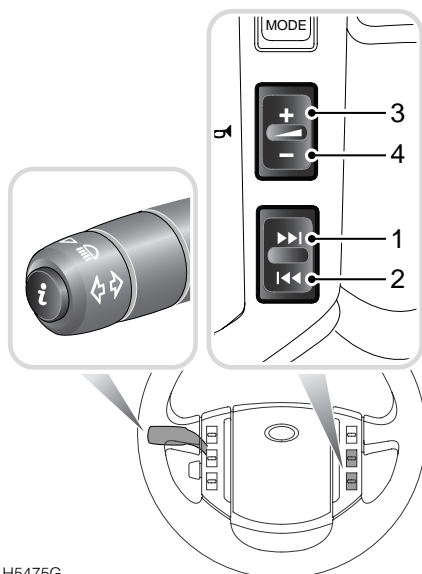


# Trip Computer

## SETTINGS

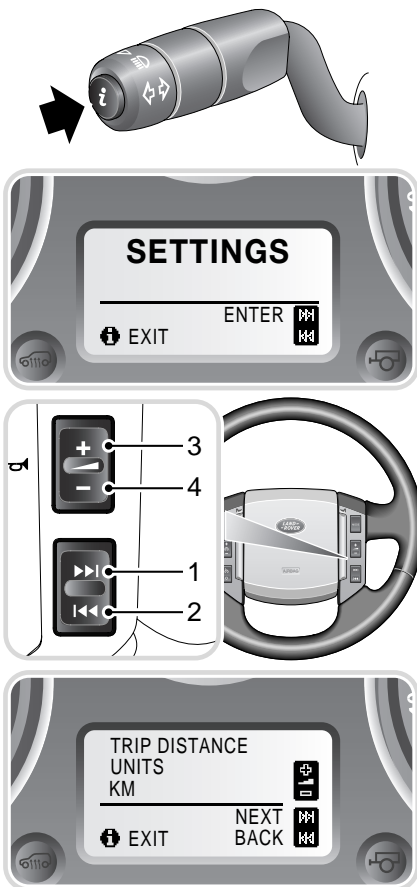
Various vehicle functions can be selected to suit personal requirements. These can be set by the driver.



H5475G

With the ignition key in any position, but with the vehicle stationary and a blank screen displayed, a short press (less than two seconds) on the **i** button on the end of the direction/turn indicator stalk brings up the **SETTINGS** display.

Once this screen is displayed, pressing button **1** gives access to the menu of options that can be personalised.



H6424G

Move through the **SETTINGS** menu by pressing buttons **1** or **2**, and make choices by pressing buttons **3** or **4**.

When you have finished making adjustments, a short press (less than two seconds) on the **i** button will return you to the trip computer display.

# Trip Computer

TRIP COMPUTER SETTINGS	CHOICE
TRIP DISTANCE UNITS	MILES/KM
FUEL USAGE UNITS	MPG L/100 km Km/l
EXTERNAL TEMPERATURE	°C or °F
OVERSPEED WARNING (Set a personal speed limit - Warnings are displayed in the message center)	Off 20 - 250 km/h or 20 to 140 mph in 5-unit steps (Units set as trip distance)
HEADLAMP OFF DELAY	30/60/120/240 seconds
AUTO DOOR LOCK (speed related locking)	ON/OFF
REVERSE MIRROR DIP	ON/OFF
LAZY ENTRY	ON/OFF
RESTORE DEFAULT SETTINGS	YES/NO

## Confirming choices

After making any changes to the **SETTINGS** options, press the **i** button again to save settings and exit.

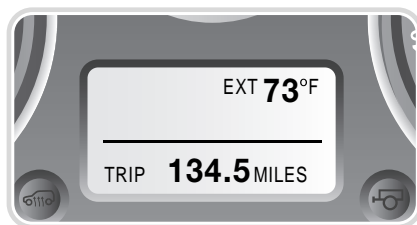
**Note:** If the vehicle is moved while any changes are being made to the Settings options, the system will prevent any further input until the vehicle is stationary again.

## Key memory

All of the choices made during Settings are stored within the vehicles memory. The choices are referenced to the remote control that was used during the process.

These choices are recalled when the vehicle is next unlocked using that remote handset.

## Function selection



H5471N

The trip computer function can be set to give a wide range of information, with the units used by the displays being chosen by the driver.

# Trip Computer

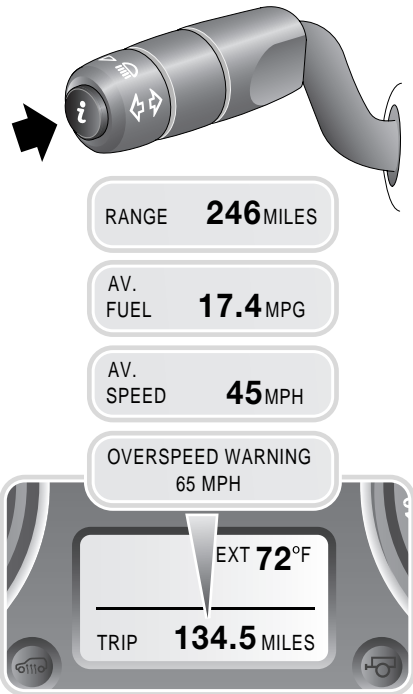
The system is also used to display any warning messages generated by the vehicle's self-checking facility.

At engine start-up, the main message center shows SYSTEM CHECK IN PROGRESS. When this check is completed, the screen will show the outside temperature. If the vehicle is in motion, the screen will also show the trip distance, using the last used units.

The trip computer statistics can be viewed by pressing the **i** button on the end of the direction indicator stalk.

A long press of the button (over two seconds) will zero the trip distance recorder which will then start to record distance from that point.

A series of short presses of the button (less than two seconds) will scroll through the following:



H5474N

- Available range (with current fuel tank contents).
- Average consumption.
- Average speed.
- The option to activate/deactivate the overspeed warning function (a long press of the button turns the function on or off).
- A review of active warning messages.
- A blank trip computer window (screen shows outside temperature).
- A display of trip distance.